

February Special Meeting Agenda

A special meeting of the Board of Trustees of School District #35 has been scheduled for **Friday, February 26, 2021 at 1:00pm** electronically via Zoom. (All policies can be found at www.gallatingatewayschool.com.)

Call to Order

Presiding Trustee's explanation of procedures

Public Comment- Non Agenda Items- Sign in sheet

New Business

Review and Consider Bond Materials & Information

Set agenda for February 26, 2021 meeting

Next Agenda Setting Meeting: April 2, 2021 at 10am

Adjournment

ZOOM MEETING INFORMATION:

1. Login details are on the district website-- [See District Calendar](#)
2. Please ensure your mic is muted until called upon by the Committee Chair
3. Public Comment is accepted two times during the meeting:
 - a. During non-agenda public comment for items not on the agenda
 - b. When the Committee Chair opens it for public comment as determined appropriate
4. To participate from a mobile device or computer:
 - a. Please use the "Raise Hand" button under "Participants" button at the bottom of your screen
 - b. Once called on please unmute yourself to provide comments
5. To participate from a phone when dialed in:
 - a. *9 to raise and lower hand for public comment
 - b. Once called on please press *6 to unmute yourself to provide comment

"The Gallatin Gateway School community empowers our students to take responsibility for their learning so they may achieve their individual potentials as lifelong learners and productive citizens."

Audience Participation

The Board recognizes the value of public comment on educational issues and the importance of involving members of the public in its meetings. The Board also recognizes the statutory and constitutional rights of the public to participate in governmental operations. To allow fair and orderly expression of public comments, the Board will permit public participation through oral or written comments during the “public comment” section of the Board agenda and prior to a final decision on a matter of significant interest to the public. The Chairperson may control such comment to ensure an orderly progression of the meeting.

Individuals wishing to be heard by the Chairperson shall first be recognized by the Chairperson. Individuals, after identifying themselves, will proceed to make comments as briefly as the subject permits. The Chairperson may interrupt or terminate an individual’s statement when appropriate, including when statements are out of order, too lengthy, personally directed, abusive, obscene, or irrelevant. The Board as a whole shall have the final decision in determining the appropriateness of all such rulings. It is important for all participants to remember that Board meetings are held in public but are not public meetings. Members of the public shall be recognized and allowed input during the meeting, at the discretion of the Chairperson.

Cross Reference: 1420 School Board Meeting Procedure

Legal Reference: Article II, Section 8, Montana Constitution – Right of participation
Article II, Section 10, Montana Constitution – Right of privacy
§§ 2-3-101, et seq., MCA Notice and Opportunity to Be Heard

“The Gallatin Gateway School community empowers our students to take responsibility for their learning so they may achieve their individual potentials as lifelong learners and productive citizens.”

Agenda Item: Review and Consider Bond Materials & Information

Recommended motion: to approve the following informational documents for the May 4, 2021 bond election as presented: storyboards, tri-fold brochure, door hanger, postcard, and table tent.

The Design-Build team and administration has been collaborating on the following materials for the Board to review and approve regarding the upcoming bond election:

- Storyboards
 - full content messaging
- Tri-fold brochure (2-sided)
 - almost full content messaging
- Door hanger (2-sided)
 - talking points & bond election info/tax impact
- Postcard (2-sided)
 - talking points
- Table tent
 - talking points & bond election info/tax impact

Once approved, these materials will be posted to the District website for any individual or organization to print and distribute. In addition, the materials will be used by the Superintendent when presenting information to the community and advocating for the bond.

**MINUTES
SPECIAL MEETING
BOARD OF TRUSTEES, GALLATIN GATEWAY SCHOOL DISTRICT #35**

Call to Order

The Board of Trustees of the Gallatin Gateway School District #35 met at 1:00pm Friday, February 26, 2021 virtually via Zoom. Board Chair Aaron Schweierman presided and called the meeting to order at 1:02pm.

Trustees Present

Aaron Schwieterman, Board Chair; Julie Fleury, Board Vice-Chair; Mary Martin, Carissa Paulson, Patti Ringo (departed at 1:15pm)

Trustees Absent

None

Staff Present

Theresa Keel, Superintendent; and Carrie Fisher, District Clerk

Others Present

None

Presiding Trustee's Explanation of Procedures

Board Chair Aaron Schwieterman explained the public comment process to be followed for addressing the Board in accordance with Gallatin Gateway School policy. He noted: 1) that prior to a vote the public may comment on agenda items; 2) there will be time for public comment on non-agenda items; and 3) public comment periods are not intended to be a question and answer session.

Public Comment on Non- Agenda Items

None

NEW BUSINESS

Review and Consider Bond Materials & Information

Motion(amended): Trustee Patti Ringo to approve the following informational documents for the May 4, 2021 bond election as presented, with any changes as recommended by MTSBA: storyboards, tri-fold brochure, door hanger, postcard, and table tent.

Seconded: Vice Chair Julie Fleury

Public Comment: None

For: Fleury, Martin, Paulson, Ringo, Schwieterman

Opposed: None

Motion passed unanimously.

Once reviewed by MTSBA and any recommended changes are made by the administration the informational materials will be posted on the District website and used by the Superintendent when discussing the upcoming bond election with community members and voters.

Set agenda for March 10, 2021 regular meeting

Board Chair Aaron Schwieterman led a discussion regarding the agenda for the March 10, 2021 regular meeting. The individuals present discussed agenda items to be included on the agenda and District Clerk Carrie Fisher will finalize the agenda with the Superintendent.

Next Agenda Setting Meeting:


April 2, 2021 at 10am.

Adjournment

Board Chair Aaron Schwieterman adjourned the meeting at 1:31pm.



Aaron Schwieterman, Board Chair



Carrie Fisher, District Clerk

Meeting Today's Needs, Preparing for the Future

Gallatin Gateway Schools
Bond Election Concept



The Vision:

Gallatin Gateway School embraces an engaging learning culture in a safe, nurturing environment where each student thrives now and into the future. We will do this by honoring our community's rich culture and heritage, while being prepared for future advancements, effective learning modalities, and growth.

MAIN ENTRY PERSPECTIVE / SITE CIRCULATION



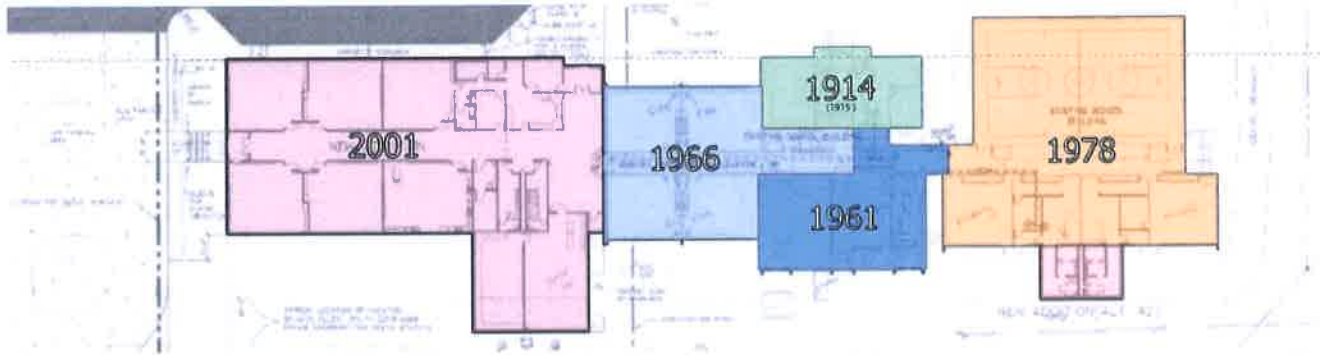
Meeting Today's Needs, Preparing for the Future



Facility Health, Code, & Life Safety (HCLS):

The basis of the bond is built on the deferred maintenance needs of the building.

- The school building areas range in age from 21 – 100+ functioning years
- The last significant improvements were completed over 20 years ago
- There were numerous HCLS deficiencies identified including but not limited to:
 - i. No fire suppression system
 - ii. Outdated fire alarm system
 - iii. Mechanical, Plumbing, & Electrical systems not functioning properly and way beyond useful life expectancy
 - iv. Lack of proper accessibility to many occupied areas
 - v. Moisture filtration
 - vi. Roofing replacement needs – beyond life expectancy



Meeting Today's Needs, Preparing for the Future

Gallatin Gateway Schools
Bond Election Concept



Floor Plan Concept:

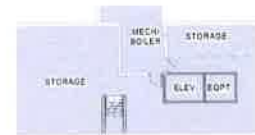
- New secure entry with centralized administration
- Accessibility to all levels
- Increased flexible classrooms & teacher support spaces

ROOM LEGEND

- CLASSROOM
- ADMIN/OFFICE/SUPPORT
- BREAKOUT AREA
- MECH/RR/SERVICES
- COMMONS/CAFETERIA/GYM/ART/MUSIC
- CORRIDOR
- FLEX SPACE



FIRST FLOOR PLAN CONCEPT



BASEMENT FLOOR PLAN (AT 1915 PORTION ONLY) CONCEPT



SECOND FLOOR PLAN (AT 1915 PORTION ONLY) CONCEPT

Meeting Today's Needs, Preparing for the Future



Project Costs & Funding:

Remodel all Areas and Addition	
Project Costs	
Major Facility MEP Deficiencies	\$ 1,494,042
Heavy Remodel + Structural	\$ 1,291,290
Remodel Finishes	\$ 713,636
Light Remodel	\$ 213,406
New Construction	\$ 1,171,247
Site Work	\$ 357,966
Construction Hard Costs Subtotal	\$ 5,241,587
Soft Costs	\$ 1,443,964
Contingency	\$ 355,244
Total Project Cost	\$ 7,040,795
Project Funding Sources	
Bond Funding	\$ 7,000,000
General Reserves	\$ 49,945
Total Funding	\$ 7,049,945

- The preliminary concept construction budget aligns with the bond amount and includes line items for project hard costs & soft costs
- Hard costs typically include:
 - Construction costs, building, site, & contingencies
- Soft costs typically include:
 - Furniture, fixtures, equipment, design fees, permitting fees, bond fees
- Contingencies are important for all projects and especially for renovations

The Investment - Taxpayer Impact:

See Gallatin Gateway School's Website for all Bond Election Information
www.gallatingatewayschool.com

- The timing is right as the District pays off its only debt and 20-year bond
- Bond interest rates are currently low, the construction timing is advantageous for pricing, and getting done before future building escalations are realized

Mill Levy Impact Analysis: \$7,000,000 for a 20 year Term

Estimated Tax Increase for Individual RESIDENTIAL TAXPAYER:		'Net' New Bond Levy (starting in 2021/22)	
2020/21 Tax Year "MARKET VALUE" of Residential Property	2020/21 Tax Year "TAXABLE VALUE" of Residential Property	Estimated ANNUAL Tax Increase	Estimated "MONTHLY" Tax Increase
\$100,000	\$1,350	\$69.94	\$5.83
\$300,000	\$4,050	\$209.81	\$17.48
\$500,000	\$6,750	\$349.68	\$29.14

Note: Tax Impact calculator available on GGS website: www.gallatingatewayschool.com

Meeting Today's Needs, Preparing for the Future

Gallatin Gateway Schools
Bond Election Concept



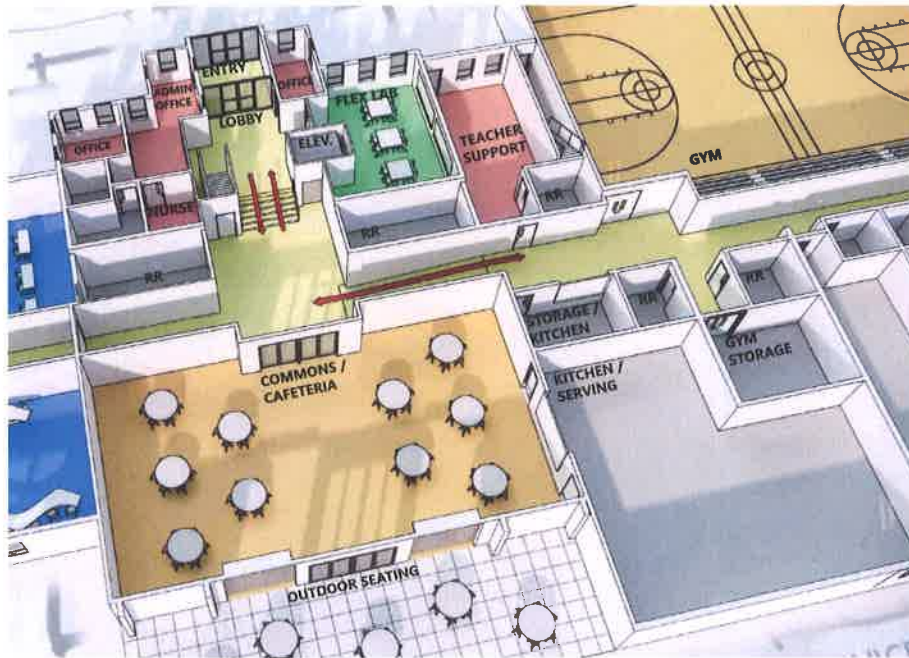
Community Zone & Activities Center:

- New accessible secure entry
- Centralized administration
- Safe after-hours-use separated from remainder of school
- Enhanced cafeteria & commons
- New kitchen & serving space
- Increased gymnasium seating

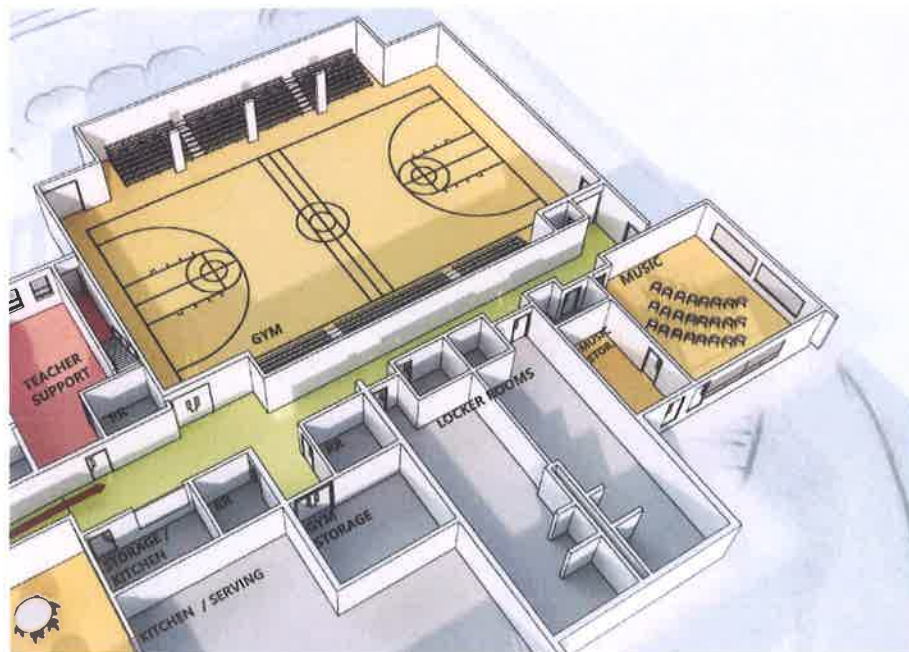
ROOM LEGEND

■	CLASSROOM
■	ADMIN/OFFICE/SUPPORT
■	BREAKOUT AREA
■	MECH/RR/SERVICES
■	COMMONS/CAFETERIA/GYM/ART/MUSIC
■	CORRIDOR
■	FLEX SPACE

COMMUNITY ZONE: MAIN ENTRY / ADMIN / COMMONS



ACTIVITIES CENTER: GYM / MUSIC / LOCKERS / SUPPORT



Meeting Today's Needs, Preparing for the Future

Gallatin Gateway Schools
Bond Election Concept



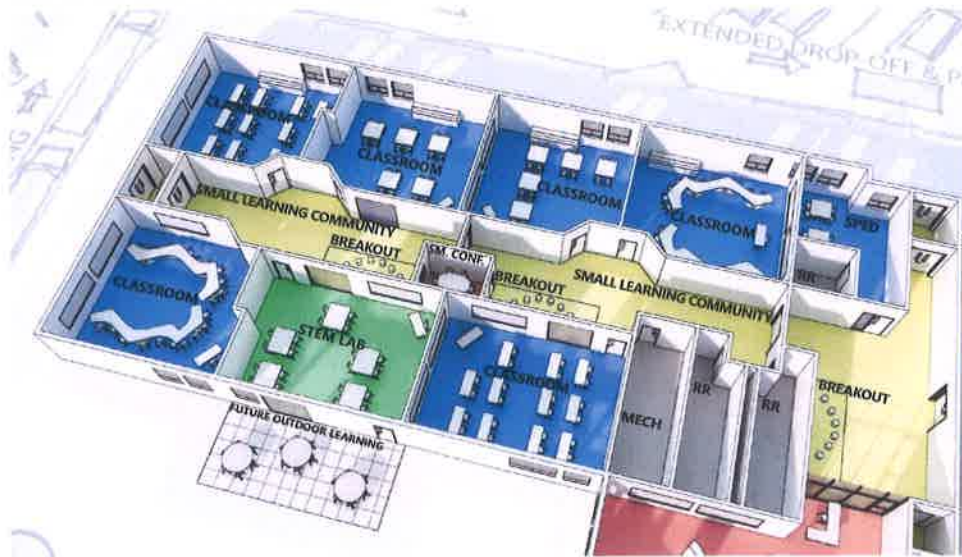
Learning Communities & Library:

- Grade groupings arranged around STEM labs
- Breakout areas adjacent to teaching spaces
- Integrated small meeting room
- Expanded Library use and flexibility

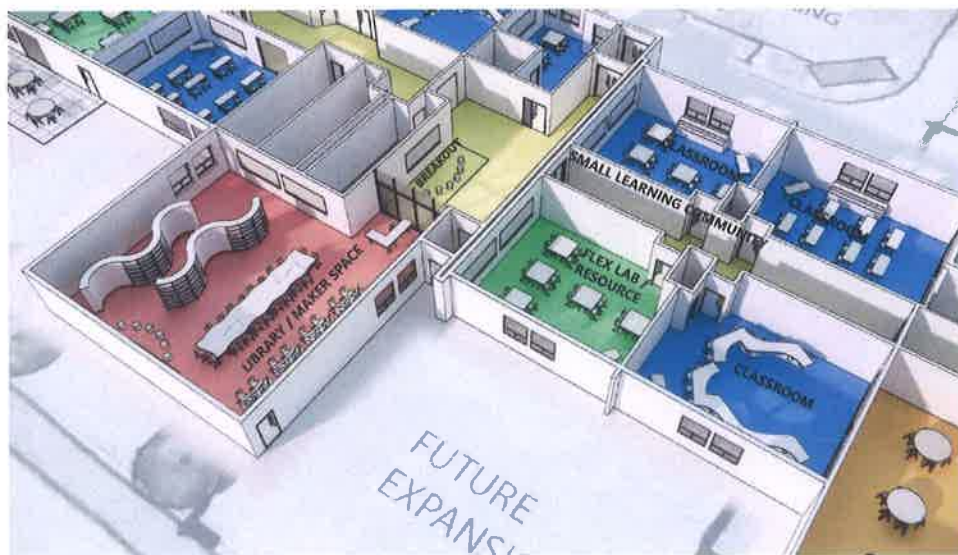
ROOM LEGEND

■	CLASSROOM
■	ADMIN/OFFICE/SUPPORT
■	BREAKOUT AREA
■	MECH/RR/SERVICES
■	COMMONS/CAFETERIA/GYM/ART/MUSIC
■	CORRIDOR
■	FLEX SPACE

SMALL LEARNING COMMUNITIES: CLASSROOMS / STEM LAB / BREAKOUT SPACE



SMALL LEARNING COMMUNITY: CLASSROOMS / BREAKOUT SPACE / LIBRARY



Why?

- The last significant improvements were over 20 years ago
- The Bond will provide the essential security, health, code and life safety upgrades desperately needed in our aging facilities, whose systems are way beyond their useful life
- The timing is right as the District pays off its only debt and 20-year bond



Gallatin Gateway School has needs!

Mill Levy Impact Analysis: \$7,000,000 for a 20-year term

Estimated Tax Increase for Individual RESIDENTIAL TAXPAYER:		'Net' New Bond Levy (starting in 2021/22)	
2020/21 Tax Year "MARKET VALUE" of Residential Property	2020/21 Tax Year "TAXABLE VALUE" of Residential Property	Estimated ANNUAL Tax Increase	Estimated "MONTHLY" Tax Increase
\$100,000	\$1,350	\$69.94	\$5.83
\$300,000	\$4,050	\$209.81	\$17.48
\$500,000	\$6,750	\$349.68	\$29.14

Note: Tax Impact calculator available on GGS website: www.gallatingatewayschool.com



Ballots mailed: April 16, 2021
 Voting ends: May 4, 2021 (8pm to the County Elections Office)
 Looking for more detailed Bond info, visit the GGS website: www.gallatingatewayschool.com
 Want a tour? Contact Gallatin Gateway School Office 406.763.4415 (ext.13) or email keel@gallatingatewayschool.com



Meeting Today's Needs, Preparing for the Future

The Vision: Gallatin Gateway School embraces an engaging learning culture in a safe, nurturing environment where each student thrives now and into the future. We will do this by honoring our community's rich culture and heritage, while being prepared for future advancements, effective learning modalities, and growth.



VOTE

Visit: www.gallatingatewayschool.com or call 406.763.4415 (ext.13)



Meeting Today's Needs, Preparing for the Future

What we heard from the School Board, Building Committee, Educators & Staff:

- The planning and design must support the Gallatin Gateway School's Strategic Plan, and the Guiding Principles

What we heard from the Community & Public Input:

- The heritage of Gallatin Gateway and the 1915 masonry portion of the building is important to keep and transform into viable and functional spaces
- The solution must take into account future sustained growth and needs
- Address top priority needs for the next 10-20 years by spending up to \$7M

These are the top priority items that were identified:

- Expanded vehicular drop-off zones
- Expanded Commons/Cafeteria with updated kitchen
- Additional teaching spaces for future growth capacity
- Small learning community grade grouping organization for the most effective learning
- Upgraded classrooms and labs for STEM
- Upgraded library with learning and maker-space places
- Expanded gymnasium seating-bleachers



Existing Conditions



Floor Plan Concept:

- Safety & security focused
- Expanded drop-off zone with designated lanes & parking
- Crosswalk improvements

Community Zone & Activities Center:

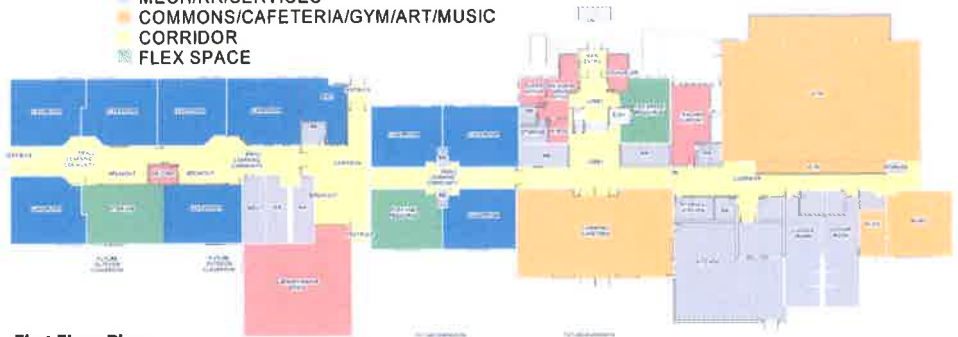
- New accessible secure entry
- Centralized administration
- Safe after-hours-use separated from remainder of school
- Enhanced cafeteria & commons
- New kitchen & serving space
- Increased gymnasium seating

Learning Communities & Library:

- Grade groupings arranged around STEM labs
- Breakout areas adjacent to teaching spaces
- Integrated small meeting room
- Expanded Library use and flexibility

ROOM LEGEND

- CLASSROOM
- ADMIN/OFFICE/SUPPORT
- BREAKOUT AREA
- MECH/RR/SERVICES
- COMMONS/CAFETERIA/GYM/ART/MUSIC
- CORRIDOR
- FLEX SPACE



First Floor Plan



SMALL LEARNING COMMUNITIES:
CLASSROOMS / STEM LAB / BREAKOUT SPACE



SMALL LEARNING COMMUNITY:
CLASSROOMS / BREAKOUT SPACE / LIBRARY



COMMUNITY ZONE:
MAIN ENTRY / ADMIN



Gallatin Gateway School

100 Mill Street | Gallatin Gateway, MT, 59730 | 406.763.4415





Bond Reminders:

Ballots mailed:

April 16, 2021

Voting ends:

May 4, 2021

(8pm to the County Elections Office)



Meeting Today's Needs, Preparing for the Future

Why?

- The last significant improvements were over 20 years ago
- The Bond will provide the essential security, health, code and life safety upgrades desperately needed in our aging facilities, whose systems are way beyond their useful life
- The timing is right as the District pays off its only debt and 20-year bond



Gallatin Gateway School has needs!

Mill Levy Impact Analysis: \$7,000,000 for a 20-year term

Estimated Tax Increase for Individual RESIDENTIAL TAXPAYER:		'Net' New Bond Levy (starting in 2021/22)	
2020/21 Tax Year "MARKET VALUE" of Residential Property	2020/21 Tax Year "TAXABLE VALUE" of Residential Property	Estimated ANNUAL Tax Increase	Estimated "MONTHLY" Tax Increase
\$100,000	\$1,350	\$69.94	\$5.83
\$300,000	\$4,050	\$209.81	\$17.48
\$500,000	\$6,750	\$349.68	\$29.14

Note: Tax Impact calculator available on GGS website: www.gallatingatewayschool.com

Want a tour?

Contact 406.763.4415 (ext.13) or email keel@gallatingatewayschool.com



VOTE



Meeting Today's Needs, Preparing for the Future

The Vision: Gallatin Gateway School embraces an engaging learning culture in a safe, nurturing environment where each student thrives now and into the future. We will do this by honoring our community's rich culture and heritage, while being prepared for future advancements, effective learning modalities, and growth.

Bond Reminders:

Ballots mailed: April 16, 2021

Voting ends: May 4, 2021
(8pm to the County
Elections Office)

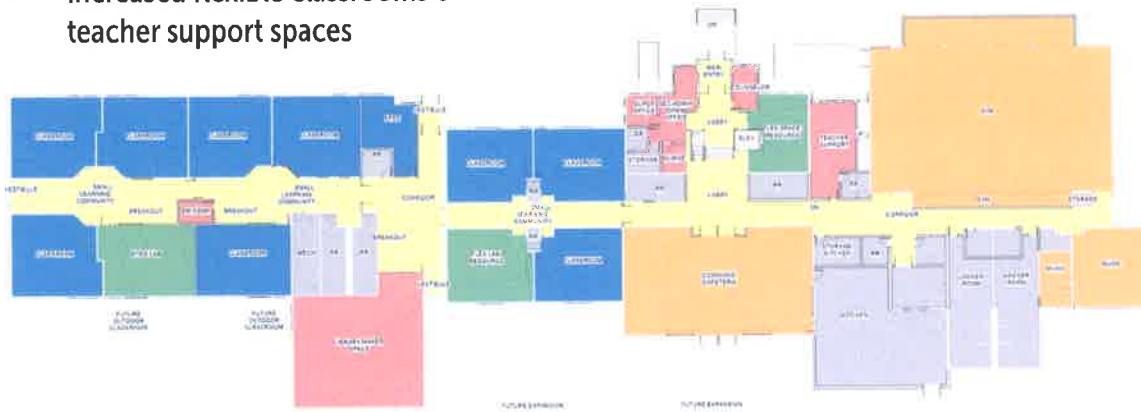
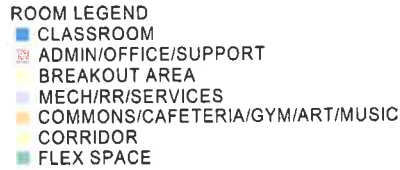


Visit: www.gallatingatewayschool.com or call 406.763.4415 (ext.13)

Meeting Today's Needs, Preparing for the Future

Proposed Concept

- New secure entry with centralized administration
- Accessibility to all levels
- Increased flexible classrooms & teacher support spaces



These are the top priority items that were identified:

- Expanded vehicular drop-off zones
- Expanded Commons/Cafeteria with updated kitchen
- Additional teaching spaces for future growth capacity
- Small learning community grade grouping organization for the most effective learning
- Upgraded classrooms and labs for STEM
- Upgraded library with learning and maker-space places
- Expanded gymnasium seating-bleachers

Mill Levy Impact Analysis:
\$7,000,000 for a 20-year term

VOTE

Estimated Tax Increase for Individual RESIDENTIAL TAXPAYER:		'Net' New Bond Levy (starting in 2021/22)	
2020/21 Tax Year "MARKET VALUE" of Residential Property	2020/21 Tax Year "TAXABLE VALUE" of Residential Property	Estimated ANNUAL Tax Increase	Estimated "MONTHLY" Tax Increase
\$100,000	\$1,350	\$69.94	\$5.83
\$300,000	\$4,050	\$209.81	\$17.48
\$500,000	\$6,750	\$349.68	\$29.14



Note: Tax Impact calculator available on GGS website: www.gallatingatewayschool.com

Visit: www.gallatingatewayschool.com or call 406.763.4415 (ext.13)

This area represents the bottom of the table tent card. This area will be not be visible and should be clear of any critical information such as text, images, graphic elements, logos, etc.

Want a tour?
 Contact
 406.763.4415 (ext.13)
 or visit
 gallatingatewayschool.com

Note: Tax impact estimates available on CSES website: www.gallatingatewayschool.com

- The last significant improvements were over 20 years ago.
- The Bond will provide the essential safety, health, code and life safety upgrades desperately needed in our aging facilities, whose systems are way beyond their useful life.
- The timing is right as the District pays off its only debt and 20-year bond.

Why?

Estimated Tax Increase for Individual Residential Taxpayer:		2020/21 Tax Year MARKET VALUE of Residential Property	2020/21 Tax Year Estimated ANNUAL Tax Increase	Estimated "MONTHLY" Tax Increase
\$500,000	\$6,750	\$1,350	\$69.94	\$5.83
\$300,000	\$4,050		\$209.81	\$17.48
\$100,000			\$349.68	\$29.14

'Net' New Bond Levy (starting in 2021/22)

Mill Levy Impact Analysis: \$7,000,000 for a 20-year term




Meeting Today's Needs, Preparing for the Future

The Vision: Gallatin Gateway School embraces an engaging learning culture in a safe, nurturing environment where each student thrives now and into the future. We will do this by honoring our community's rich culture and heritage, while being prepared for future advancements, effective learning modalities, and growth.

VOTE Bond Reminders:

Ballots mailed:
 April 16, 2021

Voting ends:
 May 4, 2021
(Open to the County
 Elections Office)

Visit: www.gallatingatewayschool.com
 or call 406.763.4415 (ext.13)



This area represents the bottom of the table tent card. This area will be not be visible and should be clear of any critical information such as text, images, graphic elements, logos, etc.